

Johnboy

Genosource Johnboy-ET

| | | | | | | | | | |
|----------|-------------------|----------|----------|--------------|------------|---------------|----|--------------------|---|
| Ki code: | 782412 | aAa: | 432 | Beta-Kasein: | A2A2 | Kappa Casein: | AB | Genetisch Kenmerk: | 0 |
| Reg.Nr: | HO840003200059526 | Geboren: | 20180913 | Naabnr: | 551H004125 | HU1F | | | |



| |
|------------------------|
| Afstamming: |
| Redrock |
| x VG 87 Dynamo |
| x EX 90 Silver |
| X VG 87 Robust |
| X VG 87 Freddie |
| X VG 85 Ramos |
| X VG 88 Shottle |

| | |
|---------------------------|------|
| Embryo Index | |
| Donor Output | 4,8 |
| Totaal Eicellen | 13,4 |
| Levensvatbare Embryos KI | 4,2 |
| Levensvatbare Embryos IVF | 4,1 |

Top Fokstier
Nr 3 in Canada
Zeer veel gevraagd
Sperma wachtlijst
A2A2
Pinkenstier
Robotgeschikt
Klauwgezondheid
Melk met hogere gehalten

STgenetics
 Holland

Totaal Fokwaarde : TPI **2830** NM: **778** GM\$ **706**

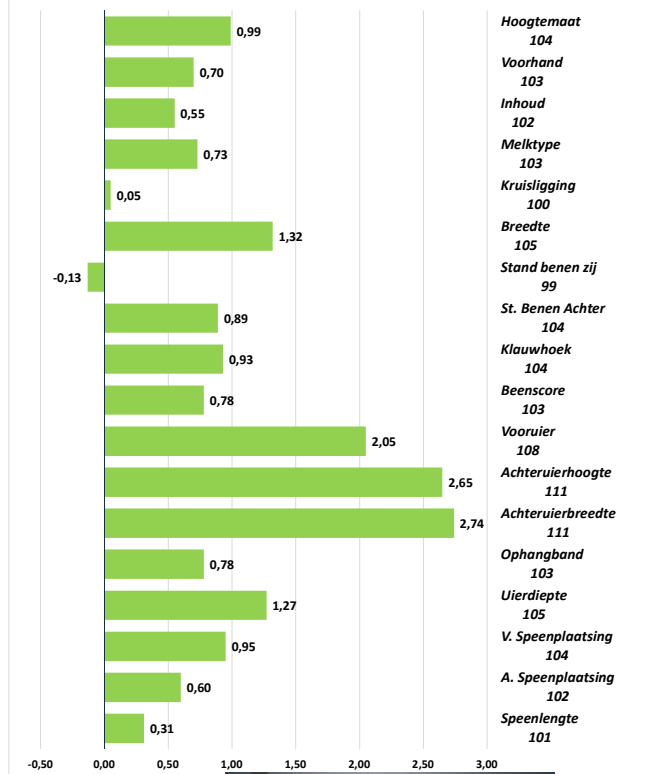
Fokwaarde USA April 2024

| | | | | | | | |
|-------------------|-------|---------|-------|-----------|----------------|---------|----|
| Genomic Fokwaarde | | | | | | Betr: % | 95 |
| Melk LBS | Vet % | Vet LBS | Eiwit | Eiwit LBS | Totaal LBS V+E | | |
| 943 | 0,14 | 77 | 0,12 | 65 | 142 | | |
| 1155 | 0,17 | 70 | 0,15 | 59 | 129 | NLD KG | |

| | | | | | | |
|-----------------|------------|-------|------|-----|---------|--|
| Exterieur PTAT: | | | 1,59 | 106 | Genomic | |
| Type | Capaciteit | Benen | Uier | | | |
| 0,55 | 0,66 | 0,65 | 1,89 | | | |
| 102 | 103 | 103 | 108 | BLI | | |

| | | | | | | |
|-------------------------|----------------|--|------|-------------|-----|-----|
| Gezondheidskenmerken | | | | | | NLD |
| Celgetal | SCS | | 2,86 | | 102 | |
| Levensduur | PL | | 3,6 | | 312 | Dgn |
| Overlevingssterkte | LIV | | 0,5 | | | |
| Dochtervruchtbaarheid | DPR | | -1,5 | | 99 | |
| Vruchtbaarheidsindex | FI | | -1,1 | | 99 | |
| Melkbaarheid | MSP | | 98 | | 98 | |
| Geboortegemak | SCE | | 2,1 | Pinkenstier | 101 | |
| Afkalfgemak | DCE | | 2,1 | | 102 | |
| Eerstekalving | EFC | | 0,8 | | 103 | |
| Draagtijd | GL | | -0,9 | | 103 | |
| Kalf levensvatbaarheid | HL | | 0,8 | | 103 | |
| Voerefficiëntie jongvee | EcoFeed Heifer | | 94 | 64 | | |
| Voerefficiëntie koe | EcoFeed Cow | | 85 | 46 | | |
| Voeropname | RFI | | 21 | | | |
| Besp. Voerkosten | Feed Saved | | -121 | | | |
| Voer benutting | FE | | 219 | | | |
| ECO2Feed | | | -483 | | | |

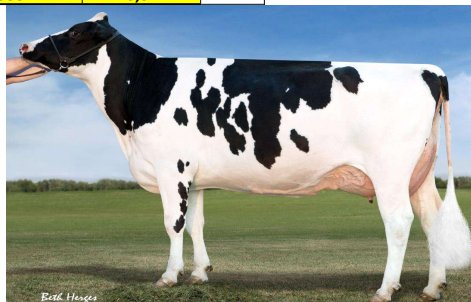
Lineair



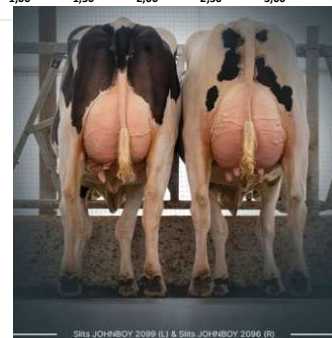
| | | | | | | |
|----------------------|----------------|--|------|------------|------|-------|
| Gezondheidskenmerken | | | | | | ROBOT |
| Gezondheidsindex | Healthindex | | 0 | Robotindex | 4,7 | 5 |
| Mastitis | Mastitis | | -1,8 | Boxtime | 8,1 | 7,6 |
| Klauwgezondheid | Hoof Health | | 107 | EMS | 4,6 | 4,4 |
| Ketose | Ketosis | | 2,3 | Melksn.H | 7,3 | 7,2 |
| Lebmaag | Disp. Abomasum | | 0,4 | Mastitis | -1,8 | >0 |
| Baarmoederontst. | Metritis | | 1,1 | A.sp.pl | 0,60 | |
| Nageboorte | Ret.Placenta | | 0,1 | V.sp.pl. | 0,95 | |
| Melkerskoorts | MilkFever | | 0,0 | Speenl. | 0,31 | |



MM: EDG Genosource 31702 EX 90



MMMM: Coyne Farms Freddie Jeven VG 87



Johnboy dochters